



Rotierende Präzisionswerkzeuge

Info:  
L1-Längen können variieren aufgrund der Schichtstärke der verschiedenen Körnungen der dazu notwendigen Rohlinge für den End-Durchmesser.

Info:  
L1-linear measures can vary due to thickness of diamond of the several grains and necessary blanks for the end-diameter.

Info:  
L1-longueurs peuvent varier à cause d'épaisseur du diamant des grains différents et les ébauches nécessaires pour le diamètre définitif.

### Galvanisch gebundene Diamant-/Bornitrid-Werkzeuge

Electro-plated diamond/CBN tools

Outils galvanisés de diamants/CBN



# 1a

## Diamant-Bornitrid-Schleifstifte \*VHM Zylinderform

Cylindrical mould  
Forme cylindrique

Best.-Nr.	Kopf-Ø mm	D	Halslänge mm L <sub>1</sub>	Körnung	Halslänge mm L <sub>1</sub>	Körnung lieferbar bis
<b>INFO → Körnung → L<sub>1</sub></b>						
B/D-S 100/4	0,4	*VHM	L <sub>1</sub> 3	bis Korn 30		
B/D-S 100/5	0,5	*VHM	L <sub>1</sub> 5	bis Korn 54	L <sub>1</sub> 3	ab 64
B/D-S 100/6	0,6	*VHM	L <sub>1</sub> 5	bis Korn 91		
B/D-S 100/7	0,7	*VHM	L <sub>1</sub> 6	bis Korn 54	L <sub>1</sub> 5	ab 64 bis 91
B/D-S 100/8	0,8	*VHM	L <sub>1</sub> 10	bis Korn 54	L <sub>1</sub> 6	ab 64 bis 91
B/D-S 100/9	0,9	*VHM	L <sub>1</sub> 10	bis Korn 91		
B/D-S 101	1,0	*VHM	L <sub>1</sub> 10	bis Korn 126	L <sub>1</sub> 6	ab 151 bis 181
B/D-S 101/1	1,1	*VHM	L <sub>1</sub> 15	bis Korn 54	L <sub>1</sub> 10	ab 64 bis 181
B/D-S 101/2	1,2	*VHM	L <sub>1</sub> 15	bis Korn 91	L <sub>1</sub> 10	ab 107 bis 181
B/D-S 101/3	1,3	*VHM	L <sub>1</sub> 15	bis Korn 126	L <sub>1</sub> 10	ab 151 bis 252
B/D-S 101/4	1,4	*VHM	L <sub>1</sub> 15	bis Korn 181	L <sub>1</sub> 10	ab 252
B/D-S 102	1,5	*VHM	L <sub>1</sub> 15	bei allen Körnungen		
B/D-S 102/6	1,6	*VHM	L <sub>1</sub> 15	bei allen Körnungen		
B/D-S 102/7	1,7	*VHM	L <sub>1</sub> 15	bei allen Körnungen		
B/D-S 102/8	1,8	*VHM	L <sub>1</sub> 15	bei allen Körnungen		
B/D-S 102/9	1,9	*VHM	L <sub>1</sub> 15	bei allen Körnungen		
B/D-S 103	2,0	*VHM	L <sub>1</sub> 15	bei allen Körnungen		
B/D-S 103/1	2,1	*VHM	L <sub>1</sub> 16	bis Korn 54	L <sub>1</sub> 15	ab 64 bis 252
B/D-S 103/2	2,2	*VHM	L <sub>1</sub> 16	bis Korn 91	L <sub>1</sub> 15	ab 107 bis 252
B/D-S 103/3	2,3	*VHM	L <sub>1</sub> 16	bis Korn 126	L <sub>1</sub> 15	ab 151 bis 252
B/D-S 103/4	2,4	*VHM	L <sub>1</sub> 16	bis Korn 181	L <sub>1</sub> 15	ab 252
B/D-S 104	2,5	*VHM	L <sub>1</sub> 16	bei allen Körnungen		
B/D-S 104/6	2,6	*VHM	L <sub>1</sub> 17	bis Korn 54	L <sub>1</sub> 16	ab 64 bis 252
B/D-S 104/7	2,7	*VHM	L <sub>1</sub> 17	bis Korn 91	L <sub>1</sub> 16	ab 107 bis 252
B/D-S 104/8	2,8	*VHM	L <sub>1</sub> 17	bis Korn 126	L <sub>1</sub> 16	ab 151 bis 252
B/D-S 104/9	2,9	*VHM	L <sub>1</sub> 17	bis Korn 181	L <sub>1</sub> 16	ab 252
B/D-S 105	3,0	*VHM	L <sub>1</sub> 17	bei allen Körnungen		

\*VHM Voll-Hart-Metall  
Solid hard metal  
Métal dur massif

# 1b

Zylinderform  
Cylindrical mould  
Forme cylindrique

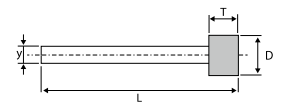


Bestell-Beispiel

D-S 106/D126  
B-S 106/B126

**S** Stahl  
Steel

Best.-Nr.	Kopf-Ø mm	D	Belaglänge mm T	Schaft-Ø mm Y	Gesamtlänge mm L
<b>Schaft-Ø 3 mm</b>					
B/D-S 105/1	3,1		5		40
B/D-S 105/2	3,2		5		40
B/D-S 105/3	3,3		5		40
B/D-S 105/4	3,4		5		40
B/D-S 106	3,5		5		40
B/D-S 106/6	3,6		5		40
B/D-S 106/7	3,7		5		40
B/D-S 106/8	3,8		5		40
B/D-S 106/9	3,9		5		40
B/D-S 107	4,0		5		40
B/D-S 108	4,5		5		40
B/D-S 109	5,0		6		40
B/D-S 110	6,0		7		40



Körnung		Diamant		Bornitrid	
D 30	D 46	B 30	B 46		
D 54	D 64	B 54	B 64		
D 76	D 91	B 76	B 91		
D 107	D 126	B 107	B 126		
D 151	D 181	B 151	B 181		
D 252		B 252			



Rotierende  
Präzisionswerkzeuge

**Galvanisch gebundene  
Diamant-/Bornitrid-  
Werkzeuge**

Electro-plated  
diamond/CBN tools

Outils galvanisés de  
diamants/CBN

ZOLL Tarifnummer 68042100



**1**  
**C**

**Diamant-  
Bornitrid-  
Schleifstifte**

**Zylinderform**

Cylindrical mould

Forme cylindrique



Bestell-Beispiel

D-S111/20/D 126

B-S111/20/B 126

**\*VHM** Voll-Hart-Metall  
Solid hard metal  
Métal dur massif

**S** Stahl  
Steel

Best.-Nr.	Kopf-Ø mm	D	Belaglänge mm	T	Schaft-Ø mm	Y	Halslänge mm	L <sub>1</sub>	Gesamtlänge mm	L	Körnung
<b>Schaft-Ø 6 mm</b>											
B/D-S 111/20	2,0		4		<b>Ø 6 mm h6</b> <b>S</b>		20		60		<b>Diamant</b>  <b>D 252</b>  <b>D 181</b>  <b>D 151</b>  <b>D 126</b>
B/D-S 111/25	2,5		4			20		60			
B/D-S 111/30	3,0		5			20		60			
B/D-S 111/35	3,5		5			20		60			
B/D-S 111/40	4,0		7			20		60			
B/D-S 111/45	4,5		7			20		60			
B/D-S 111/50	5,0		7			20		60			
B/D-S 111/55	5,5		7			20		60			
B/D-S 111	6,0		7			20		60			
B/D-S 111/20 VH	2,0	<b>*VHM</b>	4			<b>Ø 6 mm h6</b> <b>*VHM</b>		20		60	
B/D-S 111/25 VH	2,5	<b>*VHM</b>	4		20			60			
B/D-S 111/30 VH	3,0	<b>*VHM</b>	5		20			60			
B/D-S 111/35 VH	3,5	<b>*VHM</b>	5		20			60			
B/D-S 111/40 VH	4,0	<b>*VHM</b>	7		20			60			
B/D-S 111/45 VH	4,5	<b>*VHM</b>	7		20			60			
B/D-S 111/50 VH	5,0	<b>*VHM</b>	7		20			60			
B/D-S 111/55 VH	5,5	<b>*VHM</b>	7		20			60			
B/D-S 111 VH	6,0	<b>*VHM</b>	7		20			60			

**1**  
**d**

\* Auf Wunsch  
Belag 10 mm  
Upon request  
coating 10 mm  
Sur demande  
revêtement 10 mm

**S** Stahl  
Steel

Best.-Nr.	Kopf-Ø mm	D	Belaglänge mm	T	Schaft-Ø mm	Y	Halslänge mm	L <sub>1</sub>	Gesamtlänge mm	L	Körnung
<b>Schaft-Ø 6 mm</b>											
B/D-S 112	7,0		10		<b>Ø 6 mm h6</b> <b>S</b>				60		<b>Diamant</b>  <b>D 30</b>
B/D-S 113	8,0		10					60			
B/D-S 114	9,0		10					60			
B/D-S 115	10,0		10					60			
B/D-S 116	12,0		15/10 *					60			
B/D-S 117	15,0		15/10 *					60			



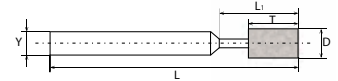
Rotierende  
Präzisionswerkzeuge

**Galvanisch gebundene  
Diamant-/Bornitrid-  
Werkzeuge**

Electro-plated  
diamond/CBN tools

Outils galvanisés de  
diamants/CBN

ZOLL Tarifnummer 68042100



**1**  
**e**

**Formschleifstifte**

shaped abrasive  
pencils





meulettes fe forme



Bestell-Beispiel

D-S126/D 126  
B-S126/B 126

**S** Stahl  
Steel

Best.-Nr.	Kopf-Ø		Belaglänge		Schaft-Ø		Halslänge		Gesamtlänge		Körnung		
	mm	D	mm	T	mm	Y	mm	L <sub>1</sub>	mm	L			
<b>Schaft-Ø 3 mm</b>											Diamant	Bornitrid	
				D-S 126									
				D-S 127									
				D-S 128									
				D-S 129									
B/D-S 126	6,0		10,0		Ø 3 mm h7						D 252	B 252	
B/D-S 127	6,0		1,5								D 181	B 181	
B/D-S 128	6,0		1,0								D 151	B 151	
B/D-S 129	0,1-3,0		14,0								D 126	B 126	
B/D-S 130	6,0-3,0		6,0								D 107	B 107	
B/D-S 131	3,5-6,0		10,0								D 91	B 91	
B/D-S 132	6,0-2,5		2,5								D 76	B 76	
B/D-S 133											D 64	B 64	

**2**  
**a**




**Diamant-  
Bornitrid-  
Schleifstifte**

Zylinderform

Cylindrical mould

Forme cylindrique

**S** Stahl  
Steel


Best.-Nr.	Kopf-Ø		Belaglänge		Schaft-Ø		Halslänge		Gesamtlänge		Körnung				
	mm	D	mm	T	mm	Y	mm	L <sub>1</sub>	mm	L					
<b>Schaft-Ø 2,35 mm</b>											Diamant	Bornitrid			
															
B/D-S 203	2,0		5,0		Ø 2,37 mm h7		13		40				D 126	B 126	
													D 107	B 107	
													D 91	B 91	
B/D-S 205	3,0		5,0										D 76	B 76	
B/D-S 207	4,0		6,0										D 64	B 64	
B/D-S 209	5,0		6,0										D 54	B 54	
B/D-S 210	6,0		6,0								D 46	B 46			
B/D-S 213	8,0		8,0								D 30	B 30			
B/D-S 215	10,0		10,0							D 30	B 30				

**Kugelform**

Spherical mould

Forme sphérique

**S** Stahl  
Steel



Best.-Nr.	Kopf-Ø		Belaglänge		Schaft-Ø		Halslänge		Gesamtlänge		Körnung					
	mm	D	mm	T	mm	Y	mm	L <sub>1</sub>	mm	L						
<b>Schaft-Ø 2,35 mm</b>											Diamant	Bornitrid				
																
B/D-S 218	2,0				Ø 2,37 mm h7		10		40				D 54	B 54		
B/D-S 219	3,0								10				40		D 46	B 46
B/D-S 220	4,0								10				40		D 30	B 30
B/D-S 221	5,0								10		40		D 30	B 30		
B/D-S 222													D 30	B 30		

**Formschleifstifte**

shaped abrasive  
pencils

meulettes fe forme

**S** Stahl  
Steel

Best.-Nr.	Kopf-Ø		Belaglänge		Schaft-Ø		Halslänge		Gesamtlänge		Körnung	
	mm	D	mm	T	mm	Y	mm	L <sub>1</sub>	mm	L		
<b>Schaft-Ø 2,35 mm</b>											Diamant	Bornitrid
												
B/D-S 228	6,0		1,0		Ø 2,37 mm h7				40			
												
B/D-S 229	0,1-3,0		12								40	



Rotierende  
Präzisionswerkzeuge

**Galvanisch gebundene  
Diamant-/Bornitrid-  
Werkzeuge**

Electro-plated  
diamond/CBN tools

Outils galvanisés de  
diamants/CBN

ZOLL Tarifnummer 68042100



3<sub>a</sub>

**Diamant-  
Bornitrid-  
Schleifstifte**

**Zylinderform**

Cylindrical mould

Forme cylindrique



Bestell-Beispiel

D-S 800/D 126  
B-S 800/B 126

Best.-Nr.	Kopf-Ø mm	D	Belaglänge mm	T	Schaft-Ø mm	Y	Halslänge mm	L <sub>1</sub>	Gesamtlänge mm	L	Körnung mm
B/D-S 800	0,8		4		3	h7	S	9	55		Max 91
B/D-S 801	1,0		4		3	h7	S	9	55		Max 181
B/D-S 802	1,3		4		3	h6	S	13	55	D 252	B 252
B/D-S 803	1,5		4		3	h6	S	13	55		
B/D-S 804	1,8		4		3	h6	S	13	55	D 181	B 181
B/D-S 805	2,0		4		3	h6	S	16	55		
B/D-S 806	2,5		4		3	h6	S	16	55	D 181	B 181
B/D-S 807	3,0		5		3	h6	S	20	55		
B/D-S 800 VHM	0,8	*VHM	4		3	h6	*VHM	9	55		Max 91
B/D-S 801 VHM	1,0	*VHM	4		3	h6	*VHM	9	55		Max 181
B/D-S 802 VHM	1,3	*VHM	4		3	h6	*VHM	13	55	D 151	B 151
B/D-S 803 VHM	1,5	*VHM	4		3	h6	*VHM	13	55		
B/D-S 804 VHM	1,8	*VHM	4		3	h6	*VHM	13	55	D 126	B 126
B/D-S 805 VHM	2,0	*VHM	4		3	h6	*VHM	16	55		
B/D-S 806 VHM	2,5	*VHM	4		3	h6	*VHM	16	55	D 126	B 126
B/D-S 807 VHM	3,0	*VHM	5		3	h6	*VHM	20	55		
B/D-S 808	3,5		5		3	h6	S	-	55	D 107	B 107
B/D-S 809	4,0		5		3	h6	S	-	55		
B/D-S 810	4,5		5		3	h6	S	-	55	D 91	B 91
B/D-S 811	5,0		5		3	h6	S	-	55		
B/D-S 812	5,0		7		6	h6	S	25	75	D 107	B 107
B/D-S 813	6,0		7		6	h6	S	30	75		
B/D-S 814	7,0		8		6	h6	S	-	75	D 76	B 76
B/D-S 815	8,0		8		6	h6	S	-	75		
B/D-S 816	10,0		10		6	h6	S	-	90	D 64	B 64
B/D-S 817	12,0		10		10	h6	S	-	90		
B/D-S 819	15,0		10		10	h6	S	-	90	D 54	B 54
B/D-S 820	3,0		4		6	h6	S	36	90		
B/D-S 821	4,0		5		6	h6	S	36	90	D 46	B 46
B/D-S 822	5,0		6		6	h6	S	36	90		
B/D-S 823	6,0		7		6	h6	S	45	90	D 46	B 46
B/D-S 824	8,0		8		6	h6	S	-	90		
B/D-S 825	8,6		8		8	h6	S	-	110	D 30	B 30
B/D-S 826	10,0		10		8	h6	S	-	110		
B/D-S 827	10,6		10		10	h6	S	-	110	D 30	B 30
B/D-S 828	12,0		10		10	h6	S	-	110		
B/D-S 829	15,0		10		10	h6	S	-	110		

**\*VHM** Voll-Hart-Metall  
Solid hard metal  
Métal dur massif

**S** Stahl  
Steel



Rotierende  
Präzisionswerkzeuge

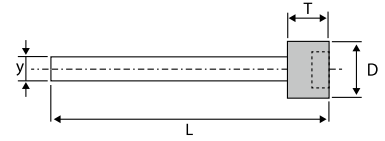


**Galvanisch gebundene  
Diamant-/Bornitrid-  
Werkzeuge**

Electro-plated  
diamond/CBN tools

Outils galvanisés de  
diamants/CBN

ZOLL Tarifnummer 68042100



**10<sub>a</sub>**

**Diamant-  
Bornitrid-  
Schleifstifte**

**Zylinderform**

Cylindrical mould

Forme cylindrique

\*\*

D: Stirnseite belegt  
ohne Aussparung

GB: Front sice  
without recess

F: Face avant est  
sans logement



Bestell-Beispiel

D-S 401/D 126

B-S 401/B 126

Best.-Nr.	Kopf-Ø mm	D	Schaft-Ø mm	Y	Gesamtlänge mm	L	Belaglänge mm	T	Körnung					
B/D-S 401	4,5 **		4,0	h6	S				Diamant					
B/D-S 402										50	5	Bornitrid		
B/D-S 403	5,0 **		4,0	h6	S				D 252					
B/D-S 404										50	5	B 252		
B/D-S 405	5,5 **		4,0	h6	S				D 181					
B/D-S 406										60		B 181		
B/D-S 407										50		B 181		
B/D-S 408			5,0	h6	S					70		D 151	B 151	
B/D-S 409			80									D 126	B 126	
B/D-S 410			50									D 107	B 107	
B/D-S 411	6,0 **		4,0	h6	S				D 91					
B/D-S 412										60		B 91		
B/D-S 413			5,0	h6	S					70		D 76	B 76	
B/D-S 414			80									D 64	B 64	
B/D-S 415	6,5 **		5,0	h6	S				D 54					
B/D-S 416										70		B 54		
B/D-S 417										80				
B/D-S 418			70									D 30	B 30	
B/D-S 419			6,0	h6	S					80				
B/D-S 420			100											
B/D-S 421	7,0		6,0	h6	S				Diamant					
B/D-S 422										80	10,0	Bornitrid		
B/D-S 423										100				
B/D-S 424	7,5		6,0	h6	S				D 64					
B/D-S 425										80	10,0	B 64		
B/D-S 426										100				
B/D-S 427										70				
B/D-S 428	8,0		6,0	h6	S				D 54					
B/D-S 429										80	10,0	B 54		
B/D-S 430										100				
B/D-S 431	8,5		6,0	h6	S				D 46					
B/D-S 432										80	10,0	B 46		
B/D-S 433										100				
B/D-S 434			8,0	h6	S					80		D 30	B 30	
B/D-S 435			100											
B/D-S 436			70											
B/D-S 437	9,0		6,0	h6	S				Diamant					
B/D-S 438										80	10,0	Bornitrid		
B/D-S 439			70											
B/D-S 440			8,0	h6	S					80				
B/D-S 441	100													

Auf Wunsch Belaglänge 8 mm  
Upon request coating length 8 mm  
Sur demande longueur de revêtement 8 mm

**S** Stahl  
Steel

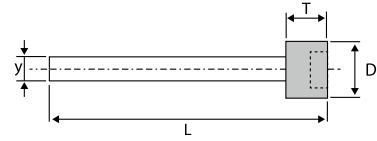


Rotierende  
Präzisionswerkzeuge

**Galvanisch gebundene  
Diamant-/Bornitrid-  
Werkzeuge**

Electro-plated  
diamond/CBN tools

Outils galvanisés de  
diamants/CBN



**10<sub>a</sub>**

**Diamant-  
Bornitrid-  
Schleifstifte**

**Zylinderform**

Cylindrical mould

Forme cylindrique



Bestell-Beispiel

D-S 442/D 126

B-S 442/B 126

Best.-Nr.	Kopf-Ø mm	D	Schaft-Ø mm	Y	Gesamtlänge mm	L	Belaglänge mm	T	Körnung mm
B/D-S 442	9,5	9,5	6,0	h6	S		10,0		Diamant
B/D-S 443									
B/D-S 444			100						
B/D-S 445			70						
B/D-S 446			80						
B/D-S 447			100						
B/D-S 448	10,0	10,0	6,0	h6	S		10,0		D 181
B/D-S 449									
B/D-S 450			100						
B/D-S 451			70						
B/D-S 452			80						
B/D-S 453			100						
B/D-S 454	10,5	10,5	6,0	h6	S		15,0		D 151
B/D-S 455									
B/D-S 456			100						
B/D-S 457			70						
B/D-S 458			80						
B/D-S 459			100						
B/D-S 460	80								
B/D-S 461	11,0	11,0	10,0	h6	S		15,0		D 107
B/D-S 462									
B/D-S 463			120						
B/D-S 464			70						
B/D-S 465			80						
B/D-S 466			100						
B/D-S 467	11,5	11,5	6,0	h6	S		15,0		D 91
B/D-S 468									
B/D-S 469			100						
B/D-S 470			70						
B/D-S 471			80						
B/D-S 472			100						
B/D-S 473	12,0	12,0	8,0	h6	S		15,0		D 76
B/D-S 474									
B/D-S 475			100						
B/D-S 476			70						
B/D-S 477			80						
B/D-S 478			100						
B/D-S 479	12,0	12,0	10,0	h6	S		15,0		D 64
B/D-S 480									
B/D-S 481			120						
B/D-S 482			70						
B/D-S 483			80						
B/D-S 484			100						
B/D-S 485	12,0	12,0	6,0	h6	S		15,0		D 54
B/D-S 486									
B/D-S 487			100						
B/D-S 488			70						
B/D-S 489			80						
B/D-S 490			100						
B/D-S 491	12,0	12,0	8,0	h6	S		15,0		D 46
B/D-S 492									
B/D-S 493			100						
B/D-S 494			70						
B/D-S 495			80						
B/D-S 496			100						
B/D-S 497	12,0	12,0	10,0	h6	S		15,0		D 30
B/D-S 498									
B/D-S 499			120						
B/D-S 500			70						
B/D-S 501			80						
B/D-S 502			100						

Auf Wunsch Belaglänge 10 mm  
Upon request coating length 10 mm  
Sur demande longueur de revêtement 10 mm

**S** Stahl  
Steel



Rotierende  
Präzisionswerkzeuge

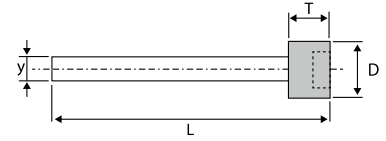


**Galvanisch gebundene  
Diamant-/Bornitrid-  
Werkzeuge**

Electro-plated  
diamond/CBN tools

Outils galvanisés de  
diamants/CBN

ZOLL Tarifnummer 68042100



**10<sub>a</sub>**

**Diamant-  
Bornitrid-  
Schleifstifte**

**Zylinderform**

Cylindrical mould

Forme cylindrique



Bestell-Beispiel

D-S 490/D 126

B-S 490/B 126

Best.-Nr.	Kopf-Ø mm	D	Schaft-Ø mm	Y	Gesamtlänge mm	L	Belaglänge mm	T	Körnung mm		
B/D-S 490	12,5		6,0	h6	S		15,0		Diamant		
B/D-S 491										70	
B/D-S 492										80	
B/D-S 493			100								
B/D-S 494			8,0	h6	S					70	
B/D-S 495											80
B/D-S 496											100
B/D-S 497			10,0	h6	S					80	
B/D-S 498											100
B/D-S 499											120
B/D-S 500	13,0		6,0	h6	S		15,0		Diamant		
B/D-S 501										70	
B/D-S 502										80	
B/D-S 503			8,0	h6	S					100	
B/D-S 504											80
B/D-S 505											100
B/D-S 506			10,0	h6	S					80	
B/D-S 507											100
B/D-S 508											120
B/D-S 509			13,5		6,0					h6	S
B/D-S 510	70										
B/D-S 511	80										
B/D-S 512	8,0	h6			S	100					
B/D-S 513							80				
B/D-S 514							100				
B/D-S 515	10,0	h6			S	80					
B/D-S 516							100				
B/D-S 517							120				
B/D-S 518	14,0				6,0	h6	S		15,0		Diamant
B/D-S 519			70								
B/D-S 520			80								
B/D-S 521			8,0	h6	S	100					
B/D-S 522							80				
B/D-S 523							100				
B/D-S 524			10,0	h6	S	80					
B/D-S 525							100				
B/D-S 526							120				
B/D-S 527			14,5		6,0	h6	S				
B/D-S 528	70										
B/D-S 529	80										
B/D-S 530	8,0	h6			S	100					
B/D-S 531							80				
B/D-S 532							100				
B/D-S 533	10,0	h6			S	80					
B/D-S 534							100				
B/D-S 534							120				

Auf Wunsch Belaglänge 10 mm  
Upon request coating length 10 mm  
Sur demande longueur de revêtement 10 mm

**S** Stahl  
Steel





Rotierende  
Präzisionswerkzeuge

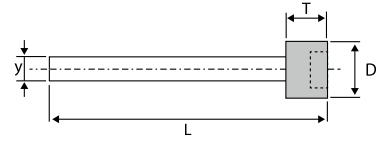


**Galvanisch gebundene  
Diamant-/Bornitrid-  
Werkzeuge**

Electro-plated  
diamond/CBN tools

Outils galvanisés de  
diamants/CBN

ZOLL Tarifnummer 68042100



**10<sub>a</sub>**

**Diamant-  
Bornitrid-  
Schleifstifte**

**Zylinderform**

Cylindrical mould

Forme cylindrique



Bestell-Beispiel

D-S 535/D 126  
B-S 535/B 126

Best.-Nr.	Kopf-Ø mm	D	Schaft-Ø mm	Y	Gesamtlänge mm	L	Belaglänge mm	T	Körnung mm										
B/D-S 535	15,0	15,0	6,0	h6	S	15,0	15,0		Diamant										
B/D-S 536										80									
B/D-S 537										100									
B/D-S 538			70	8,0	h6					S	15,0	15,0	D 252	B 252					
B/D-S 539			80																
B/D-S 540			100																
B/D-S 541			80	10,0	h6					S					15,0	15,0	D 181	B 181	
B/D-S 542			100																
B/D-S 543			120																
B/D-S 544			70	15,5	15,5					15,5									15,0
B/D-S 545	80																		
B/D-S 546	100																		
B/D-S 547	70	8,0	h6			S	15,0	15,0	D 126										
B/D-S 548	80																		
B/D-S 549	100																		
B/D-S 550	80	10,0	h6			S					15,0	15,0	D 107	B 107					
B/D-S 551	100																		
B/D-S 552	120																		
B/D-S 553	70	16,0	16,0			16,0									15,0	15,0	D 91	B 91	
B/D-S 554	80																		
B/D-S 555	100																		
B/D-S 556	70			8,0	h6					S									15,0
B/D-S 557	80																		
B/D-S 558	100																		
B/D-S 559	80			10,0	h6		S	15,0	15,0	D 64									
B/D-S 560	100																		
B/D-S 561	120																		
B/D-S 562	70			16,5	16,5		16,5				15,0	15,0	D 54	B 54					
B/D-S 563	80																		
B/D-S 564	100																		
B/D-S 565	70	8,0	h6			S									15,0	15,0	D 46	B 46	
B/D-S 566	80																		
B/D-S 567	100																		
B/D-S 568	80	10,0	h6			S													15,0
B/D-S 569	100																		
B/D-S 570	120																		
B/D-S 571	70	17,0	17,0			17,0		15,0	15,0	Diamant									
B/D-S 572	80																		
B/D-S 573	100																		
B/D-S 574	70			8,0	h6		S				15,0	15,0	Diamant	Bornitrid					
B/D-S 575	80																		
B/D-S 576	100																		
B/D-S 577	80			10,0	h6		S								15,0	15,0	Diamant	Bornitrid	
B/D-S 578	100																		
B/D-S 579	120																		

Auf Wunsch Belaglänge 10 mm  
Upon request coating length 10 mm  
Sur demande longueur de revêtement 10 mm

**S** Stahl  
Steel





Rotierende  
Präzisionswerkzeuge

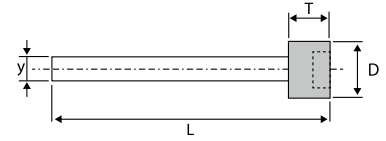


### Galvanisch gebundene Diamant-/Bornitrid- Werkzeuge

Electro-plated  
diamond/CBN tools

Outils galvanisés de  
diamants/CBN

ZOLL Tarifnummer 68042100



# 10<sub>a</sub>

Diamant-  
Bornitrid-  
Schleifstifte

Zylinderform

Cylindrical mould

Forme cylindrique



Bestell-Beispiel

D-S 580/D 126

B-S 580/B 126

Best.-Nr.	Kopf-Ø mm	D	Schaft-Ø mm	Y	Gesamtlänge mm	L	Belaglänge mm	T	Körnung mm		
B/D-S 580	17,5		6,0	h6	S		15,0		Diamant		
B/D-S 581										70	Bornitrid
B/D-S 582										80	
B/D-S 583			100								
B/D-S 584			70								
B/D-S 585			80								
B/D-S 586			100								
B/D-S 587			80								
B/D-S 588			100								
B/D-S 589			18,0		6,0					h6	
B/D-S 590	70	Bornitrid									
B/D-S 591	80										
B/D-S 592	100										
B/D-S 593	70										
B/D-S 594	80										
B/D-S 595	100										
B/D-S 596	80										
B/D-S 597	100										
B/D-S 598	18,5					8,0	h6	S		15,0	
B/D-S 599			70	Bornitrid							
B/D-S 600		80									
B/D-S 601		100									
B/D-S 602		80									
B/D-S 603		100									
B/D-S 604		70									
B/D-S 605		80									
B/D-S 606		100									
B/D-S 607		19,0				10,0	h6	S			
B/D-S 608	70				Bornitrid						
B/D-S 609	80										
B/D-S 610	100										
B/D-S 611	80										
B/D-S 612	100										
B/D-S 613	70										
B/D-S 614	80										
B/D-S 615	100										
B/D-S 616	19,5					8,0	h6	S		15,0	
B/D-S 617		70	Bornitrid								
B/D-S 618		80									
B/D-S 619		100									
B/D-S 620		80									
B/D-S 621		100									
B/D-S 622	20,0			10,0	h6	S		15,0		Diamant	
B/D-S 623			70								Bornitrid
B/D-S 624			80								
B/D-S 625			100								

Auf Wunsch Belaglänge 10 mm  
Upon request coating length 10 mm  
Sur demande longueur de revêtement 10 mm

**S** Stahl  
Steel