



Rotierende
Präzisionswerkzeuge

Info:
L1-Längen können
variieren aufgrund der
Schichtstärke der ver-
schiedenen Körnungen
der dazu notwendigen
Rohlinge für den End-
Durchmesser.

Info:
L1-linear measures can
vary due to thickness
of diamond of the
several grains and
necessary blanks for
the end-diameter.

Info:
L1-longueurs peuvent
varier à cause d'épas-
sieur du diamant des
grains différents et les
ébauches nécessaires
pour le diamètre défini-
tif.

Galvanisch gebundene Diamant-/Bornitrid- Werkzeuge

Electro-plated
diamond/CBN tools

Outils galvanisés de
diamants/CBN

ZOLL Tarifnummer 68042100

1 a

Diamant- Bornitrid- Schleifstifte *VHM Zylinderform

Cylindrical mould
Forme cylindrique

Best.-Nr.	Kopf-Ø mm	D	Halslänge mm L ₁	Körnung	Halslänge mm L ₁	Körnung lieferbar bis
INFO → Körnung → L₁						
B/D-S 100/4	0,4	*VHM	L ₁ 3	bis Korn 30		
B/D-S 100/5	0,5	*VHM	L ₁ 5	bis Korn 30	L ₁ 3	ab 54
B/D-S 100/6	0,6	*VHM	L ₁ 5	bis Korn 91		
B/D-S 100/7	0,7	*VHM	L ₁ 6	bis Korn 54	L ₁ 5	ab 64 bis 91
B/D-S 100/8	0,8	*VHM	L ₁ 10	bis Korn 30	L ₁ 6	ab 54 bis 91
B/D-S 100/9	0,9	*VHM	L ₁ 10	bis Korn 91		
B/D-S 101	1,0	*VHM	L ₁ 10	bis Korn 126	L ₁ 6	ab 151 bis 181
B/D-S 101/1	1,1	*VHM	L ₁ 15	bis Korn 30	L ₁ 10	ab 46 bis 181
B/D-S 101/2	1,2	*VHM	L ₁ 15	bis Korn 91	L ₁ 10	ab 107 bis 181
B/D-S 101/3	1,3	*VHM	L ₁ 15	bis Korn 126	L ₁ 10	ab 151 bis 252
B/D-S 101/4	1,4	*VHM	L ₁ 15	bis Korn 181	L ₁ 10	ab 252
B/D-S 102	1,5	*VHM	L ₁ 15	bei allen Körnungen		
B/D-S 102/6	1,6	*VHM	L ₁ 15	bei allen Körnungen		
B/D-S 102/7	1,7	*VHM	L ₁ 15	bei allen Körnungen		
B/D-S 102/8	1,8	*VHM	L ₁ 15	bei allen Körnungen		
B/D-S 102/9	1,9	*VHM	L ₁ 15	bei allen Körnungen		
B/D-S 103	2,0	*VHM	L ₁ 15	bei allen Körnungen		
B/D-S 103/1	2,1	*VHM	L ₁ 16	bis Korn 54	L ₁ 15	ab 64 bis 252
B/D-S 103/2	2,2	*VHM	L ₁ 16	bis Korn 91	L ₁ 15	ab 107 bis 252
B/D-S 103/3	2,3	*VHM	L ₁ 16	bis Korn 126	L ₁ 15	ab 151 bis 252
B/D-S 103/4	2,4	*VHM	L ₁ 16	bis Korn 181	L ₁ 15	ab 252
B/D-S 104	2,5	*VHM	L ₁ 16	bei allen Körnungen		
B/D-S 104/6	2,6	*VHM	L ₁ 17	bis Korn 54	L ₁ 16	ab 64 bis 252
B/D-S 104/7	2,7	*VHM	L ₁ 17	bis Korn 91	L ₁ 16	ab 107 bis 252
B/D-S 104/8	2,8	*VHM	L ₁ 17	bis Korn 126	L ₁ 16	ab 151 bis 252
B/D-S 104/9	2,9	*VHM	L ₁ 17	bis Korn 181	L ₁ 16	ab 252
B/D-S 105	3,0	*VHM	L ₁ 17	bei allen Körnungen		

*VHM Voll-Hart-Metall
Solid hard metal
Métal dur massif

1 b

Zylinderform
Cylindrical mould
Forme cylindrique



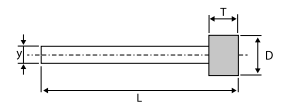
Bestell-Beispiel

D-S 106/D126

B-S 106/B126

S Stahl
Steel

Best.-Nr.	Kopf-Ø mm	D	Belaglänge mm T	Schaft-Ø mm Y	Gesamtlänge mm L
Schaft-Ø 3 mm					
B/D-S 105/1	3,1		5		40
B/D-S 105/2	3,2		5		40
B/D-S 105/3	3,3		5		40
B/D-S 105/4	3,4		5		40
B/D-S 106	3,5		5		40
B/D-S 106/6	3,6		5		40
B/D-S 106/7	3,7		5		40
B/D-S 106/8	3,8		5		40
B/D-S 106/9	3,9		5		40
B/D-S 107	4,0		5		40
B/D-S 108	4,5		5		40
B/D-S 109	5,0		6		40
B/D-S 110	6,0		7		40



Körnung		Diamant		Bornitrid	
D 30	D 46	B 30	B 46		
D 54	D 64	B 54	B 64		
D 76	D 91	B 76	B 91		
D 107	D 126	B 107	B 126		
D 151	D 181	B 151	B 181		
D 252		B 252			



Rotierende
Präzisionswerkzeuge

**Galvanisch gebundene
Diamant-/Bornitrid-
Werkzeuge**

Electro-plated
diamond/CBN tools

Outils galvanisés de
diamants/CBN



1
C

**Diamant-
Bornitrid-
Schleifstifte**

Zylinderform

Cylindrical mould

Forme cylindrique




Bestell-Beispiel

D-S111/20/D 126

B-S111/20/B 126

***VHM** Voll-Hart-Metall
Solid hard metal
Métal dur massif


S Stahl
Steel

Best.-Nr.	Kopf-Ø mm	D	Belaglänge mm	T	Schaft-Ø mm	Y	Halslänge mm	L ₁	Gesamtlänge mm	L	Körnung
 Schaft-Ø 6 mm											
B/D-S 111/20	2,0		4		Ø 6 mm h6 S		20		60		Diamant Bornitrid
B/D-S 111/25	2,5		4			20		60			
B/D-S 111/30	3,0		5			20		60			
B/D-S 111/35	3,5		5			20		60			
B/D-S 111/40	4,0		7			20		60			
B/D-S 111/45	4,5		7			20		60			
B/D-S 111/50	5,0		7			20		60			
B/D-S 111/55	5,5		7			20		60			
B/D-S 111	6,0		7			20		60			
B/D-S 111/20 VH	2,0	*VHM	4			Ø 6 mm h6 *VHM		20		60	
B/D-S 111/25 VH	2,5	*VHM	4		20			60			
B/D-S 111/30 VH	3,0	*VHM	5		20			60			
B/D-S 111/35 VH	3,5	*VHM	5		20			60			
B/D-S 111/40 VH	4,0	*VHM	7		20			60			
B/D-S 111/45 VH	4,5	*VHM	7		20			60			
B/D-S 111/50 VH	5,0	*VHM	7		20			60			
B/D-S 111/55 VH	5,5	*VHM	7		20			60			
B/D-S 111 VH	6,0	*VHM	7		20			60			

1
d

* Auf Wunsch
Belag 10 mm
Upon request
coating 10 mm
Sur demande
revêtement 10 mm

S Stahl
Steel

Best.-Nr.	Kopf-Ø mm	D	Belaglänge mm	T	Schaft-Ø mm	Y	Halslänge mm	L ₁	Gesamtlänge mm	L	Körnung
 Schaft-Ø 6 mm											
B/D-S 112	7,0		10		Ø 6 mm h6 S				60		Diamant Bornitrid
B/D-S 113	8,0		10					60			
B/D-S 114	9,0		10					60			
B/D-S 115	10,0		10					60			
B/D-S 116	12,0		15/10 *					60			
B/D-S 117	15,0		15/10 *					60			



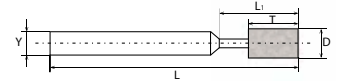
Rotierende
Präzisionswerkzeuge

**Galvanisch gebundene
Diamant-/Bornitrid-
Werkzeuge**

Electro-plated
diamond/CBN tools

Outils galvanisés de
diamants/CBN

ZOLL Tarifnummer 68042100



1
e

Formschleifstifte

shaped abrasive
pencils

meulettes fe forme



Bestell-Beispiel

D-S126/D 126
B-S126/B 126

S Stahl
Steel

Best.-Nr.	Kopf-Ø		Belaglänge		Schaft-Ø		Halslänge		Gesamtlänge		Körnung																					
	mm	D	mm	T	mm	Y	mm	L ₁	mm	L																						
Schaft-Ø 3 mm																																
			D-S 126		Ø 3 mm h7 S						Diamant																					
			D-S 127									Ø 3 mm h7 S						Bornitrid														
			D-S 128																Ø 3 mm h7 S						D 252							
			D-S 129																							Ø 3 mm h7 S						B 252
			D-S 130																													
			D-S 131		Ø 3 mm h7 S						B 181																					
			D-S 132									Ø 3 mm h7 S						D 151														
B/D-S 126	6,0		10,0		Ø 3 mm h7 S						B 151																					
B/D-S 127	6,0		1,5									Ø 3 mm h7 S						B 252														
B/D-S 128	6,0		1,0		Ø 3 mm h7 S						B 181																					
B/D-S 129	0,1-3,0		14,0									Ø 3 mm h7 S						B 151														
B/D-S 130	6,0-3,0		6,0		Ø 3 mm h7 S						B 151																					
B/D-S 131	3,5-6,0		10,0									Ø 3 mm h7 S						B 151														
B/D-S 132	6,0-2,5		2,5		Ø 3 mm h7 S						B 151																					

2
a

**Diamant-
Bornitrid-
Schleifstifte**

Zylinderform

Cylindrical mould

Forme cylindrique

S Stahl
Steel

Best.-Nr.	Kopf-Ø		Belaglänge		Schaft-Ø		Halslänge		Gesamtlänge		Körnung																																			
	mm	D	mm	T	mm	Y	mm	L ₁	mm	L																																				
Schaft-Ø 2,35 mm																																														
			B/D-S 203		Ø 2,35 mm h7 S						D 126																																			
			B/D-S 205									Ø 2,35 mm h7 S						B 126																												
			B/D-S 207																Ø 2,35 mm h7 S						D 107																					
			B/D-S 209																							Ø 2,35 mm h7 S						B 107														
			B/D-S 210																														Ø 2,35 mm h7 S						D 91							
			B/D-S 213																																					Ø 2,35 mm h7 S						B 91
			B/D-S 215																																											
B/D-S 203	2,0		5,0		Ø 2,35 mm h7 S						B 76																																			
B/D-S 205	3,0		5,0									Ø 2,35 mm h7 S						D 64																												
B/D-S 207	4,0		6,0		Ø 2,35 mm h7 S						B 64																																			
B/D-S 209	5,0		6,0									Ø 2,35 mm h7 S						D 54																												
B/D-S 210	6,0		6,0		Ø 2,35 mm h7 S						B 54																																			
B/D-S 213	8,0		8,0									Ø 2,35 mm h7 S						D 46																												
B/D-S 215	10,0		10,0		Ø 2,35 mm h7 S						B 46																																			

Kugelform

Spherical mould

Forme sphérique

S Stahl
Steel

Best.-Nr.	Kopf-Ø		Belaglänge		Schaft-Ø		Halslänge		Gesamtlänge		Körnung																					
	mm	D	mm	T	mm	Y	mm	L ₁	mm	L																						
Schaft-Ø 2,35 mm																																
			B/D-S 218		Ø 2,35 mm h7 S						D 54																					
			B/D-S 219									Ø 2,35 mm h7 S						B 54														
			B/D-S 220																Ø 2,35 mm h7 S						D 46							
			B/D-S 221																							Ø 2,35 mm h7 S						B 46
B/D-S 218	2,0																															
B/D-S 219	3,0				Ø 2,35 mm h7 S						B 30																					
B/D-S 220	4,0											Ø 2,35 mm h7 S						D 46														
B/D-S 221	5,0				Ø 2,35 mm h7 S						B 46																					

Formschleifstifte

shaped abrasive
pencils

meulettes fe forme

S Stahl
Steel

Best.-Nr.	Kopf-Ø		Belaglänge		Schaft-Ø		Halslänge		Gesamtlänge		Körnung
	mm	D	mm	T	mm	Y	mm	L ₁	mm	L	
Schaft-Ø 2,35 mm											
			B/D-S 228		Ø 2,35 mm h7 S						Diamant
			B/D-S 229								
B/D-S 228	6,0		1,0		Ø 2,35 mm h7 S						D 30
B/D-S 229	0,1-3,0		12								



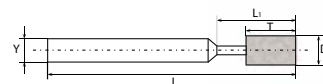
Rotierende
Präzisionswerkzeuge

**Galvanisch gebundene
Diamant-/Bornitrid-
Werkzeuge**

Electro-plated
diamond/CBN tools

Outils galvanisés de
diamants/CBN

ZOLL Tarifnummer 68042100



3_a

**Diamant-
Bornitrid-
Schleifstifte**

Zylinderform

Cylindrical mould

Forme cylindrique



Bestell-Beispiel

D-S 800/D 126
B-S 800/B 126

Best.-Nr.	Kopf-Ø		Belaglänge		Schaft-Ø		Halslänge		Gesamtlänge		Körnung	
	mm	D	mm	T	mm	Y	mm	L ₁	mm	L	mm	
<p>Zg. 1</p>												
B/D-S 800	0,8		4		3	h7	S	9		55		Max 91
B/D-S 801	1,0		4		3	h7	S	9		55		Max 181
B/D-S 802	1,3		4		3	h6	S	13		55	D 252	B 252
B/D-S 803	1,5		4		3	h6	S	13		55		
B/D-S 804	1,8		4		3	h6	S	13		55	D 181	B 181
B/D-S 805	2,0		4		3	h6	S	16		55		
B/D-S 806	2,5		4		3	h6	S	16		55	D 181	B 181
B/D-S 807	3,0		5		3	h6	S	20		55		
B/D-S 800 VHM	0,8	*VHM	4		3	h6	*VHM	9		55		Max 91
B/D-S 801 VHM	1,0	*VHM	4		3	h6	*VHM	9		55		Max 181
B/D-S 802 VHM	1,3	*VHM	4		3	h6	*VHM	13		55	D 151	B 151
B/D-S 803 VHM	1,5	*VHM	4		3	h6	*VHM	13		55		
B/D-S 804 VHM	1,8	*VHM	4		3	h6	*VHM	13		55	D 126	B 126
B/D-S 805 VHM	2,0	*VHM	4		3	h6	*VHM	16		55		
B/D-S 806 VHM	2,5	*VHM	4		3	h6	*VHM	16		55	D 126	B 126
B/D-S 807 VHM	3,0	*VHM	5		3	h6	*VHM	20		55		
B/D-S 808	3,5		5		3	h6	S	-		55	D 107	B 107
B/D-S 809	4,0		5		3	h6	S	-		55		
B/D-S 810	4,5		5		3	h6	S	-		55	D 91	B 91
B/D-S 811	5,0		5		3	h6	S	-		55		
B/D-S 812	5,0		7		6	h6	S	25		75	D 76	B 76
B/D-S 813	6,0		7		6	h6	S	30		75		
B/D-S 814	7,0		8		6	h6	S	-		75	D 64	B 64
B/D-S 815	8,0		8		6	h6	S	-		75		
B/D-S 816	10,0		10		6	h6	S	-		90	D 54	B 54
B/D-S 817	12,0		10		10	h6	S	-		90		
B/D-S 819	15,0		10		10	h6	S	-		90	D 46	B 46
B/D-S 820*	3,0		4		6	h6	S	36		90		
B/D-S 821*	4,0		5		6	h6	S	36		90	D 46	B 46
B/D-S 822*	5,0		6		6	h6	S	36		90		
B/D-S 823*	6,0		7		6	h6	S	45		90	D 30	B 30
B/D-S 824	8,0		8		6	h6	S	-		90		
B/D-S 825	8,6		8		8	h6	S	-		110	Diamant	Bornitrid
B/D-S 826	10,0		10		8	h6	S	-		110		
B/D-S 827	10,6		10		10	h6	S	-		110	Diamant	Bornitrid
B/D-S 828	12,0		10		10	h6	S	-		110		
B/D-S 829	15,0		10		10	h6	S	-		110	Diamant	Bornitrid

* ohne Aussparung
an Stirn wie Zg. 1

***VHM** Voll-Hart-Metall
Solid hard metal
Métal dur massif

S Stahl
Steel

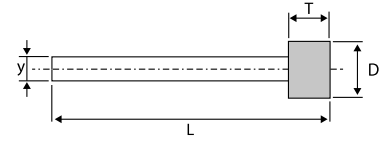


**Galvanisch gebundene
Diamant-/Bornitrid-
Werkzeuge**

Electro-plated
diamond/CBN tools

Outils galvanisés de
diamants/CBN

 ZOLL Tarifnummer 68042100



10_a

**Diamant-
Bornitrid-
Schleifstifte**

Zylinderform

Cylindrical mould

Forme cylindrique

**

D: Stirnseite belegt
ohne Aussparung

GB: Front sice
without recess

F: Face avant est
sans logement



Bestell-Beispiel

D-S 401/D 126

B-S 401/B 126

Best.-Nr.	Kopf-Ø mm	D	Schaft-Ø mm	Y	Gesamtlänge mm	L	Belaglänge mm	T	Körnung																																																																																																																																																																																																																																																
B/D-S 401	4,5 **		4,0	h6	S		5		Diamant	Bornitrid																																																																																																																																																																																																																																															
B/D-S 402											50	75	B/D-S 403	5,0 **		4,0	h6	S		5		D 252	B 252	B/D-S 404	50	75	B/D-S 405	5,5 **		4,0	h6	S		5		D 181	B 181	B/D-S 406	50	60	B/D-S 407	50	70	B/D-S 408	70	80	B/D-S 409	80		B/D-S 410	6,0 **		4,0	h6	S		6		D 151	B 151	B/D-S 411	50	60	B/D-S 412	50	70	B/D-S 413	70	80	B/D-S 414	6,5 **		5,0	h6	S		6		D 107	B 107	B/D-S 415	50	70	B/D-S 416	70	80	B/D-S 417	80	70	B/D-S 418	70	80	B/D-S 419	7,0		6,0	h6	S		10,0		D 91	B 91	B/D-S 420	80	100	B/D-S 421	7,5		6,0	h6	S		10,0		D 76	B 76	B/D-S 422	80	100	B/D-S 423	100	70	B/D-S 424	8,0		6,0	h6	S		10,0		D 64	B 64	B/D-S 425	80	100	B/D-S 426	8,5		6,0	h6	S		10,0		D 54	B 54	B/D-S 427	70	80	B/D-S 428	80	100	B/D-S 429	9,0		8,0	h6	S		10,0		D 46	B 46	B/D-S 430	70	80	B/D-S 431	80	100	B/D-S 432	100	70	B/D-S 433	8,0		6,0	h6	S		10,0		D 30	B 30	B/D-S 434	80	100	B/D-S 435	9,0		8,0	h6	S		10,0		Diamant	Bornitrid	B/D-S 436	70	80	B/D-S 437	80	100	B/D-S 438	8,0		6,0	h6	S		10,0		Diamant	Bornitrid	B/D-S 439	70	80	B/D-S 440	8,0		8,0	h6	S		10,0		Diamant	Bornitrid	B/D-S 441	80	100																
B/D-S 403	5,0 **		4,0	h6	S		5		D 252	B 252																																																																																																																																																																																																																																															
B/D-S 404											50	75	B/D-S 405	5,5 **		4,0	h6	S		5		D 181	B 181	B/D-S 406	50	60	B/D-S 407											50	70	B/D-S 408	70	80	B/D-S 409	80		B/D-S 410	6,0 **		4,0	h6											S		6		D 151	B 151	B/D-S 411	50	60	B/D-S 412											50	70	B/D-S 413	70	80	B/D-S 414	6,5 **		5,0	h6	S		6		D 107	B 107	B/D-S 415	50	70	B/D-S 416	70	80	B/D-S 417	80	70	B/D-S 418	70											80	B/D-S 419	7,0		6,0	h6	S		10,0		D 91	B 91	B/D-S 420	80	100	B/D-S 421	7,5		6,0	h6	S												10,0		D 76	B 76	B/D-S 422	80											100	B/D-S 423	100	70	B/D-S 424	8,0		6,0	h6	S		10,0		D 64	B 64	B/D-S 425	80	100	B/D-S 426	8,5		6,0	h6	S												10,0		D 54	B 54	B/D-S 427	70	80	B/D-S 428	80	100	B/D-S 429	9,0		8,0	h6	S		10,0		D 46	B 46	B/D-S 430	70	80	B/D-S 431	80	100	B/D-S 432	100	70	B/D-S 433	8,0		6,0	h6	S		10,0		D 30	B 30	B/D-S 434	80	100	B/D-S 435	9,0		8,0	h6
B/D-S 405	5,5 **		4,0	h6	S		5		D 181	B 181																																																																																																																																																																																																																																															
B/D-S 406											50	60																																																																																																																																																																																																																																													
B/D-S 407											50	70																																																																																																																																																																																																																																													
B/D-S 408											70	80																																																																																																																																																																																																																																													
B/D-S 409											80																																																																																																																																																																																																																																														
B/D-S 410	6,0 **		4,0	h6	S		6		D 151	B 151																																																																																																																																																																																																																																															
B/D-S 411											50	60																																																																																																																																																																																																																																													
B/D-S 412											50	70																																																																																																																																																																																																																																													
B/D-S 413											70	80																																																																																																																																																																																																																																													
B/D-S 414	6,5 **		5,0	h6	S		6		D 107	B 107																																																																																																																																																																																																																																															
B/D-S 415											50	70																																																																																																																																																																																																																																													
B/D-S 416											70	80																																																																																																																																																																																																																																													
B/D-S 417											80	70																																																																																																																																																																																																																																													
B/D-S 418											70	80																																																																																																																																																																																																																																													
B/D-S 419	7,0		6,0	h6	S		10,0		D 91	B 91																																																																																																																																																																																																																																															
B/D-S 420											80	100																																																																																																																																																																																																																																													
B/D-S 421	7,5		6,0	h6	S		10,0		D 76	B 76																																																																																																																																																																																																																																															
B/D-S 422											80	100																																																																																																																																																																																																																																													
B/D-S 423											100	70																																																																																																																																																																																																																																													
B/D-S 424	8,0		6,0	h6	S		10,0		D 64	B 64																																																																																																																																																																																																																																															
B/D-S 425											80	100																																																																																																																																																																																																																																													
B/D-S 426	8,5		6,0	h6	S		10,0		D 54	B 54																																																																																																																																																																																																																																															
B/D-S 427											70	80																																																																																																																																																																																																																																													
B/D-S 428											80	100																																																																																																																																																																																																																																													
B/D-S 429	9,0		8,0	h6	S		10,0		D 46	B 46																																																																																																																																																																																																																																															
B/D-S 430											70	80																																																																																																																																																																																																																																													
B/D-S 431											80	100																																																																																																																																																																																																																																													
B/D-S 432											100	70																																																																																																																																																																																																																																													
B/D-S 433	8,0		6,0	h6	S		10,0		D 30	B 30																																																																																																																																																																																																																																															
B/D-S 434											80	100																																																																																																																																																																																																																																													
B/D-S 435	9,0		8,0	h6	S		10,0		Diamant	Bornitrid																																																																																																																																																																																																																																															
B/D-S 436											70	80																																																																																																																																																																																																																																													
B/D-S 437											80	100																																																																																																																																																																																																																																													
B/D-S 438	8,0		6,0	h6	S		10,0		Diamant	Bornitrid																																																																																																																																																																																																																																															
B/D-S 439											70	80																																																																																																																																																																																																																																													
B/D-S 440	8,0		8,0	h6	S		10,0		Diamant	Bornitrid																																																																																																																																																																																																																																															
B/D-S 441											80	100																																																																																																																																																																																																																																													

Auf Wunsch Belaglänge 8 mm
Upon request coating length 8 mm
Sur demande longueur de revêtement 8 mm

S Stahl
Steel

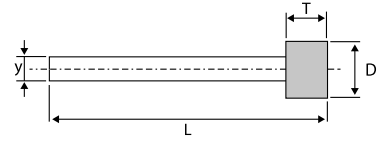


Rotierende
Präzisionswerkzeuge

**Galvanisch gebundene
Diamant-/Bornitrid-
Werkzeuge**

Electro-plated
diamond/CBN tools

Outils galvanisés de
diamants/CBN



10_a

**Diamant-
Bornitrid-
Schleifstifte**

Zylinderform

Cylindrical mould

Forme cylindrique



Bestell-Beispiel

D-S 442/D 126

B-S 442/B 126

Best.-Nr.	Kopf-Ø mm	D	Schaft-Ø mm	Y	Gesamtlänge mm	L	Belaglänge mm	T	Körnung mm
B/D-S 442	9,5		6,0	h6 S	70		10,0		Diamant
B/D-S 443					80				
B/D-S 444					100				
B/D-S 445			8,0	h6 S	70				
B/D-S 446					80				
B/D-S 447					100				
B/D-S 448	10,0		6,0	h6 S	70		10,0	D 181	
B/D-S 449					80				
B/D-S 450					100				
B/D-S 451			8,0	h6 S	70				
B/D-S 452					80				
B/D-S 453					100				
B/D-S 454	10,5		6,0	h6 S	70		15,0	D 151	
B/D-S 455					80				
B/D-S 456					100				
B/D-S 457			8,0	h6 S	70				
B/D-S 458					80				
B/D-S 459					100				
B/D-S 460	11,0		10,0	h6 S	100		15,0	D 107	
B/D-S 461					120				
B/D-S 462					120				
B/D-S 463			6,0	h6 S	70				
B/D-S 464					80				
B/D-S 465					100				
B/D-S 466	8,0	h6 S	10,0	h6 S	70		15,0	D 91	
B/D-S 467					80				
B/D-S 468					100				
B/D-S 469			8,0	h6 S	80				
B/D-S 470					100				
B/D-S 471					120				
B/D-S 472	11,5		6,0	h6 S	70		15,0	D 76	
B/D-S 473					80				
B/D-S 474					100				
B/D-S 475			8,0	h6 S	70				
B/D-S 476					80				
B/D-S 477					100				
B/D-S 478	10,0	h6 S	10,0	h6 S	80		15,0	D 64	
B/D-S 479					100				
B/D-S 480					120				
B/D-S 481			6,0	h6 S	70				
B/D-S 482					80				
B/D-S 483					100				
B/D-S 484	12,0		8,0	h6 S	70		15,0	D 54	
B/D-S 485					80				
B/D-S 486					100				
B/D-S 487			8,0	h6 S	80				
B/D-S 488					100				
B/D-S 489					120				

Auf Wunsch Belaglänge 10 mm
Upon request coating length 10 mm
Sur demande longueur de revêtement 10 mm

S Stahl
Steel



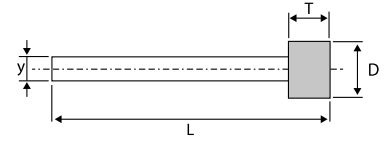
Rotierende
Präzisionswerkzeuge

**Galvanisch gebundene
Diamant-/Bornitrid-
Werkzeuge**

Electro-plated
diamond/CBN tools

Outils galvanisés de
diamants/CBN

ZOLL Tarifnummer 68042100



10^a

Diamant-
Bornitrid-
Schleifstifte

Zylinderform

Cylindrical mould

Forme cylindrique



Bestell-Beispiel

D-S 490/D 126

B-S 490/B 126

Best.-Nr.	Kopf-Ø mm	D	Schaft-Ø mm	Y	Gesamtlänge mm	L	Belaglänge mm	T	Körnung mm					
B/D-S 490	12,5		6,0	h6	S		15,0		Diamant					
B/D-S 491										70	B 252			
B/D-S 492			80	B 252										
B/D-S 493			100	B 252										
B/D-S 494			8,0	h6	S					70	80	100	D 181	B 181
B/D-S 495														
B/D-S 496			100	B 181										
B/D-S 497			10,0	h6	S					80	100	120	D 151	B 151
B/D-S 498														
B/D-S 499			80	B 151										
B/D-S 500	13,0		6,0	h6	S		15,0		Diamant					
B/D-S 501										70	B 126			
B/D-S 502			80	B 126										
B/D-S 503			100	B 126										
B/D-S 504			8,0	h6	S					80	100	120	D 107	B 107
B/D-S 505														
B/D-S 506			80	B 107										
B/D-S 507			10,0	h6	S					80	100	100	D 91	B 91
B/D-S 508														
B/D-S 509			80	B 91										
B/D-S 510	13,5		6,0	h6	S		15,0		Diamant					
B/D-S 511										70	B 76			
B/D-S 512			80	B 76										
B/D-S 513			100	B 76										
B/D-S 514			8,0	h6	S					80	100	120	D 64	B 64
B/D-S 515														
B/D-S 516			80	B 64										
B/D-S 517			10,0	h6	S					80	100	100	D 54	B 54
B/D-S 518														
B/D-S 519			80	B 54										
B/D-S 520	14,0		6,0	h6	S		15,0		Diamant					
B/D-S 521										70	B 46			
B/D-S 522			80	B 46										
B/D-S 523			100	B 46										
B/D-S 524			8,0	h6	S					80	100	120	D 30	B 30
B/D-S 525														
B/D-S 526			80	B 30										
B/D-S 527			10,0	h6	S					80	100	70	D 46	B 46
B/D-S 528														
B/D-S 529			80	B 46										
B/D-S 530	14,5		6,0	h6	S		15,0		Diamant					
B/D-S 531										70	Bornitrid			
B/D-S 532			80	Bornitrid										
B/D-S 533			100	Bornitrid										
B/D-S 534			8,0	h6	S					80	100	120	D 30	B 30
B/D-S 534														

Auf Wunsch Belaglänge 10 mm
Upon request coating length 10 mm
Sur demande longueur de revêtement 10 mm

S Stahl
Steel



Rotierende
Präzisionswerkzeuge

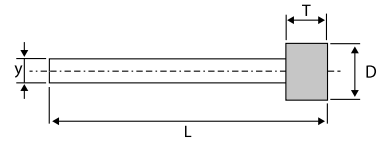


Galvanisch gebundene Diamant-/Bornitrid- Werkzeuge

Electro-plated
diamond/CBN tools

Outils galvanisés de
diamants/CBN

ZOLL Tarifnummer 68042100



10_a

Diamant-
Bornitrid-
Schleifstifte

Zylinderform

Cylindrical mould

Forme cylindrique



Bestell-Beispiel

D-S 535/D 126
B-S 535/B 126

Best.-Nr.	Kopf-Ø mm	D	Schaft-Ø mm	Y	Gesamtlänge mm	L	Belaglänge mm	T	Körnung mm		
B/D-S 535	15,0	15,0	6,0	h6	S	15,0	15,0		Diamant		
B/D-S 536										80	B 252
B/D-S 537										100	
B/D-S 538			70								
B/D-S 539			8,0	h6	S				80	D 181	
B/D-S 540			100	B 181							
B/D-S 541			80								
B/D-S 542			10,0		h6				S	100	D 151
B/D-S 543			120	B 151							
B/D-S 544			70								
B/D-S 545			6,0		h6				S	80	D 126
B/D-S 546			100	B 126							
B/D-S 547	70										
B/D-S 548	8,0	h6	S		80	D 107					
B/D-S 549	100	B 107									
B/D-S 550	80										
B/D-S 551	10,0		h6	S	100	D 91					
B/D-S 552	120	B 91									
B/D-S 553	70										
B/D-S 554	6,0		h6	S	80	D 76					
B/D-S 555	100	B 76									
B/D-S 556	70										
B/D-S 557	8,0		h6	S	80	D 64					
B/D-S 558	100	B 64									
B/D-S 559	80										
B/D-S 560	10,0		h6	S	100	D 54					
B/D-S 561	120	B 54									
B/D-S 562	70										
B/D-S 563	6,0		h6	S	80	D 46					
B/D-S 564	100	B 46									
B/D-S 565	70										
B/D-S 566	8,0		h6	S	80	D 30					
B/D-S 567	100	B 30									
B/D-S 568	80										
B/D-S 569	10,0		h6	S	100	Diamant					
B/D-S 570	120	Bornitrid									
B/D-S 571	70										
B/D-S 572	6,0		h6	S	80	D 30					
B/D-S 573	100	B 30									
B/D-S 574	70										
B/D-S 575	8,0		h6	S	80	Diamant					
B/D-S 576	100	Bornitrid									
B/D-S 577	80										
B/D-S 578	10,0		h6	S	100	Diamant					
B/D-S 579	120	Bornitrid									

Auf Wunsch Belaglänge 10 mm
Upon request coating length 10 mm
Sur demande longueur de revêtement 10 mm

S Stahl
Steel



Rotierende
Präzisionswerkzeuge

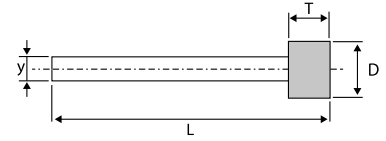


**Galvanisch gebundene
Diamant-/Bornitrid-
Werkzeuge**

Electro-plated
diamond/CBN tools

Outils galvanisés de
diamants/CBN

ZOLL Tarifnummer 68042100



10^a

Diamant-
Bornitrid-
Schleifstifte

Zylinderform

Cylindrical mould

Forme cylindrique



Bestell-Beispiel

D-S 580/D 126

B-S 580/B 126

Best.-Nr.	Kopf-Ø mm	D	Schaft-Ø mm	Y	Gesamtlänge mm	L	Belaglänge mm	T	Körnung mm		
B/D-S 580	17,5		6,0	h6	S		15,0		Diamant		
B/D-S 581										70	D 252
B/D-S 582										80	
B/D-S 583			100	D 181							
B/D-S 584			70		B 181						
B/D-S 585			80							B 151	
B/D-S 586			100	D 126							
B/D-S 587			70		B 126						
B/D-S 588			80	D 107							
B/D-S 589			100		B 107						
B/D-S 590	120	D 91									
B/D-S 591	70		B 91								
B/D-S 592	80	D 76									
B/D-S 593	100		B 76								
B/D-S 594	80	D 64									
B/D-S 595	100		B 64								
B/D-S 596	120	D 54									
B/D-S 597	70		B 54								
B/D-S 598	80	D 46									
B/D-S 599	100		B 46								
B/D-S 600	80	D 30									
B/D-S 601	100		B 30								
B/D-S 602	120	Diamant									
B/D-S 603	70		Bornitrid								
B/D-S 604	80										
B/D-S 605	100										
B/D-S 606	120										
B/D-S 607	70										
B/D-S 608	80										
B/D-S 609	100										
B/D-S 610	120										
B/D-S 611	70										
B/D-S 612	80										
B/D-S 613	100										
B/D-S 614	120										
B/D-S 615	70										
B/D-S 616	80										
B/D-S 617	100										
B/D-S 618	120										
B/D-S 619	70										
B/D-S 620	80										
B/D-S 621	100										
B/D-S 621	120										

Auf Wunsch Belaglänge 10 mm
Upon request coating length 10 mm
Sur demande longueur de revêtement 10 mm

S Stahl
Steel